

# School Facilities and Grade Organization Study

## **Oneida City School District**

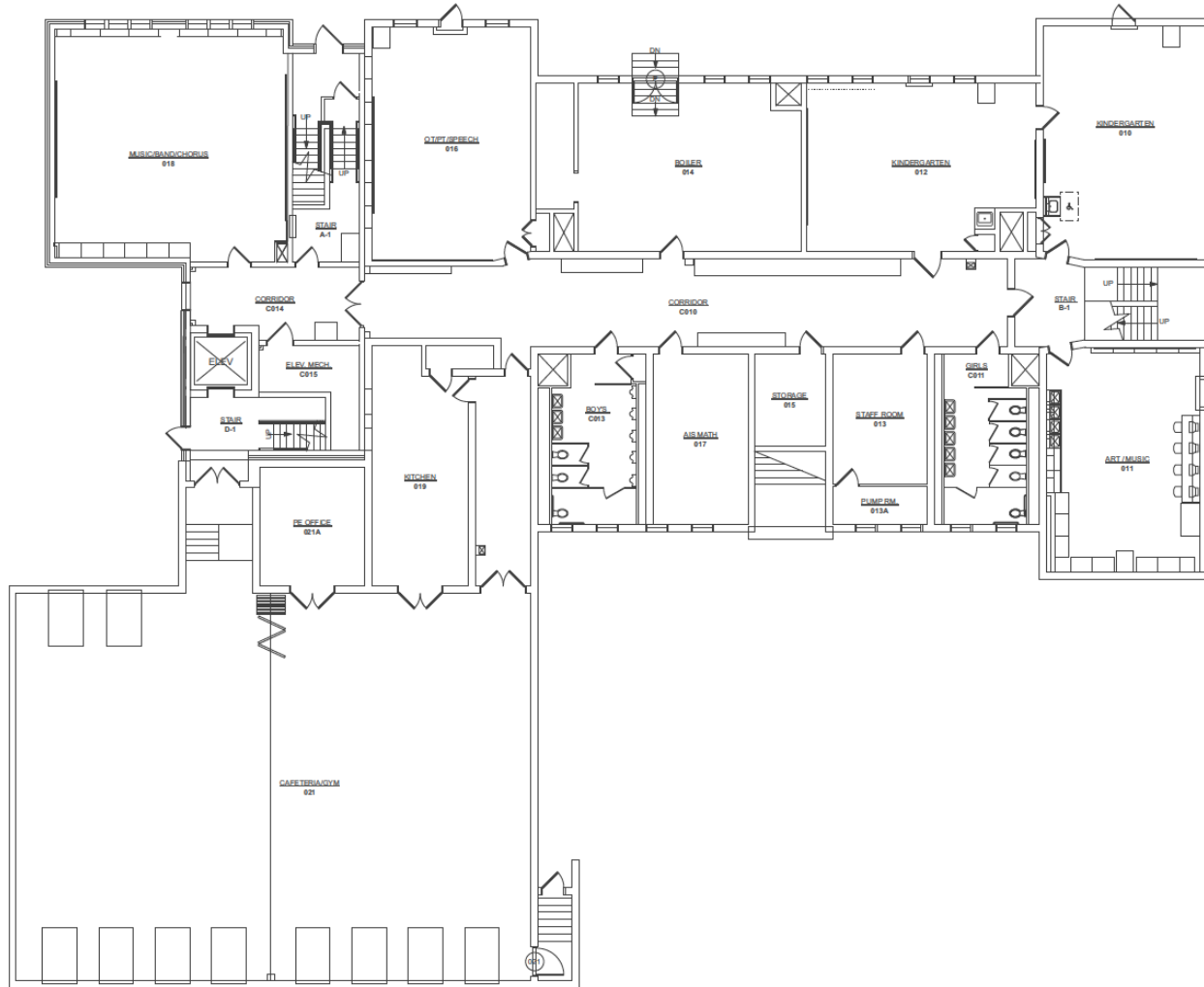
Advisory Committee

June 5, 2023



Castallo and Silky LLC  
Stephen Bocciolatt, Consultant

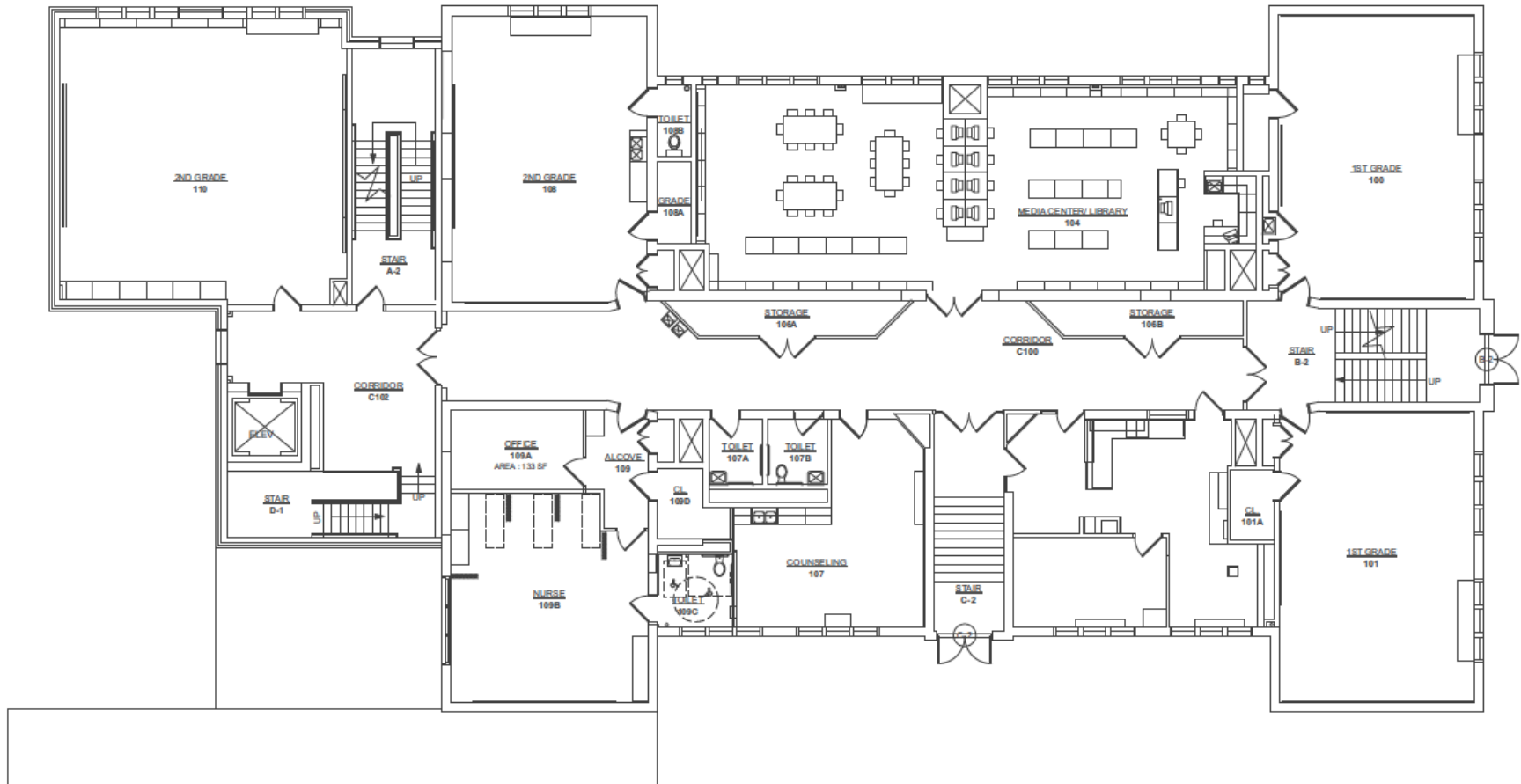
# GROUND FLOOR PLAN



# NORTH BROAD ELEMENTARY

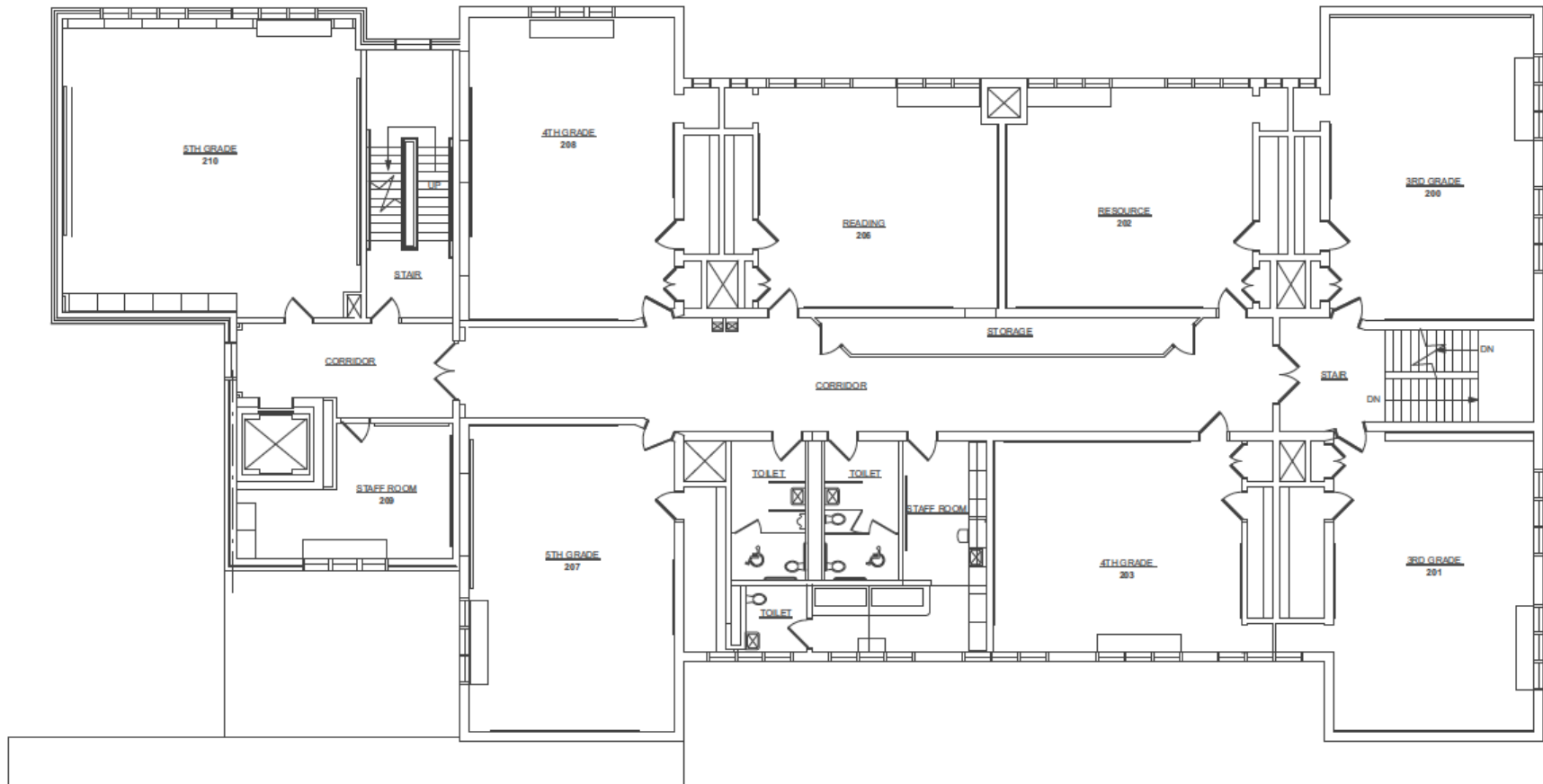


# FIRST FLOOR PLAN



# NORTH BROAD ELEMENTARY

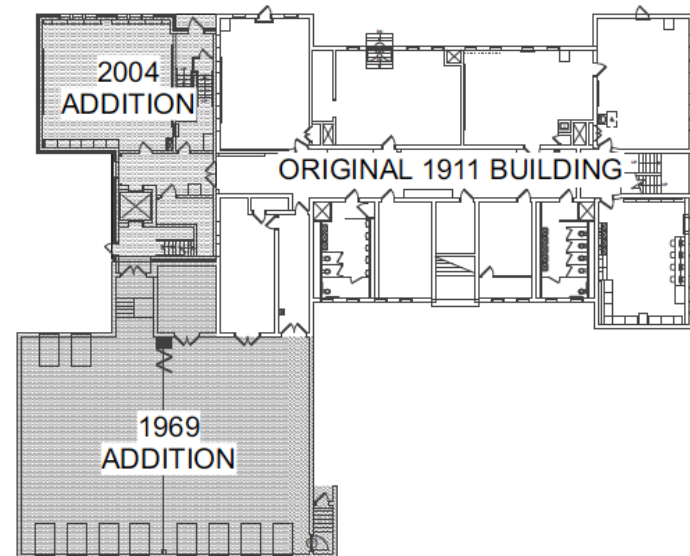
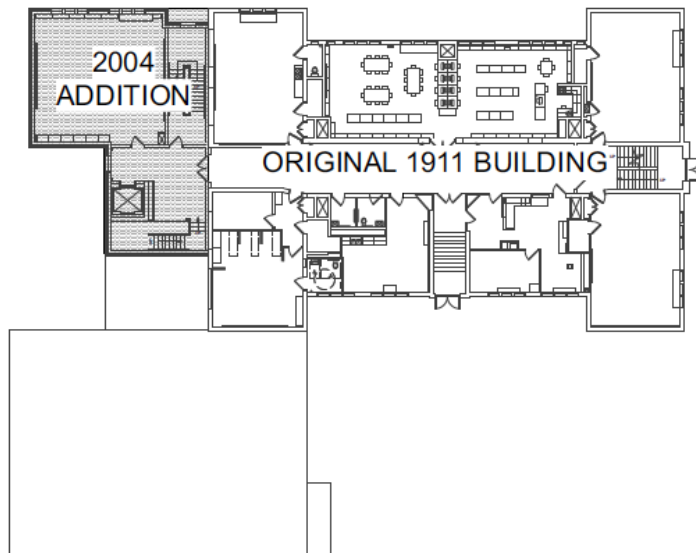
# SECOND FLOOR PLAN



# NORTH BROAD ELEMENTARY



## BUILDING VINTAGE DATES



## NORTH BROAD ELEMENTARY

# Agenda

- Questions/Comments from Building Tour
- Review Minutes from 4/27/2023 Meeting
  - Review and discuss if any additional advantages and disadvantages should be added to the grade center configuration as outlined in the minutes.
- Transportation Update
- Review of Previous Options Discussed
  - Option: Status Quo (Pre-K- 5)
  - Option: Grade Center Configuration
    - (K-2; 3-5)
    - (K-1; 2-3; 4-5)
- Option: Closing an Elementary School
  - Small Group Discussion
    - Pre-K-5 Neighborhood Schools
    - Grade Center Configuration
- Staffing Overview
- Public Questions/Comments
- Next Meeting Dates/Locations/Topics

# Transportation Update



# Transportation

## Bus Routes: updated

A reasonable attempt shall be made to limit the maximum bus route time to one hour.

### ➤ Bus Runs: From the first pick-up stop to drop off at school

- ❖ Longest: Elementary: 85 minutes; MS: 75; HS: 78
- ❖ Shortest: Elementary: 16 minutes; MS: 27; HS: 24
- ❖ Average: 65 minutes

### ➤ Number of Daily Bus Runs (19 Elementary; 22 MS & HS)

- ❖ Durhamville: 6
- ❖ North Broad: 4
- ❖ Seneca Street: 4
- ❖ Willard Prior: 5
- ❖ Middle School: 12
- ❖ High School: 10



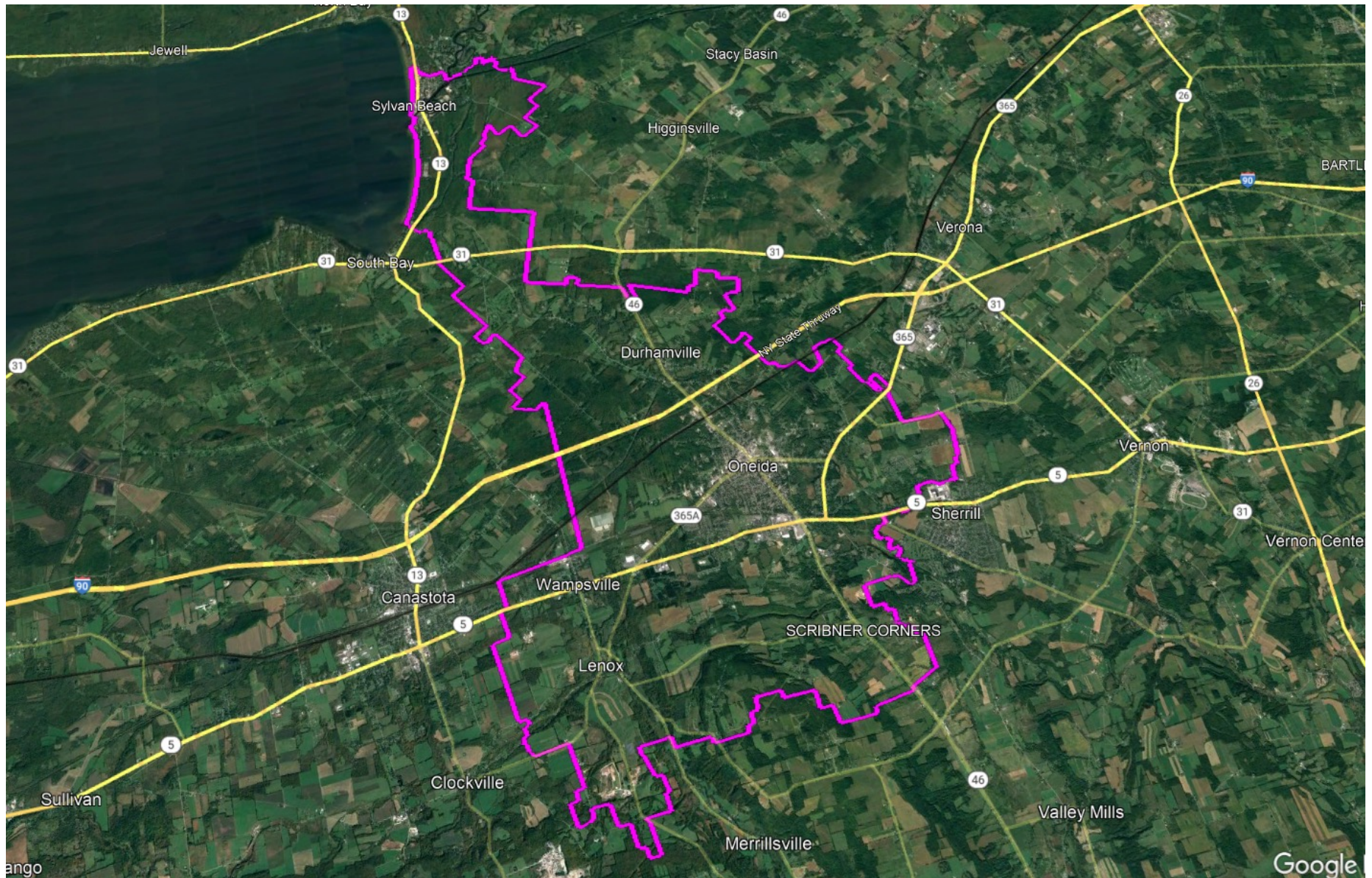
# Transportation

Average Length of Bus Rides to Each School 2022-23		
School	Average of Longest Ride	Range of Longest Ride
Durhamville	Am: 55 minutes Pm: 60 minutes	Am: 42 to 65 minutes Pm: 49 to 85 minutes
North Broad	Am: 44 minutes Pm: 47 minutes	Am: 29 to 59 minutes Pm: 24 to 68 minutes
Seneca Street	Am: 53 minutes Pm: 57 minutes	Am: 42 to 62 minutes Pm: 42 to 70 minutes
Willard Prior	Am: 43 minutes Pm: 37 minutes	Am: 37 to 61 minutes Pm: 16 to 51 minutes
Otto Shortell Middle School	Am: 46 minutes Pm: 40 minutes	Am: 27 to 75 minutes Pm: 29 to 60 minutes
Oneida High School	Am: 47minutes Pm: 39minutes	Am: 33 to 78 minutes Pm: 24 to 56 minutes
<p>Estimates of length of bus rides were taken from the bus schedules provided by the district. Times were used from the first stop on the route to the school. Routes to schools outside of the district were not included.</p>		

# The District's Elementary Schools are Located Relatively Close Together

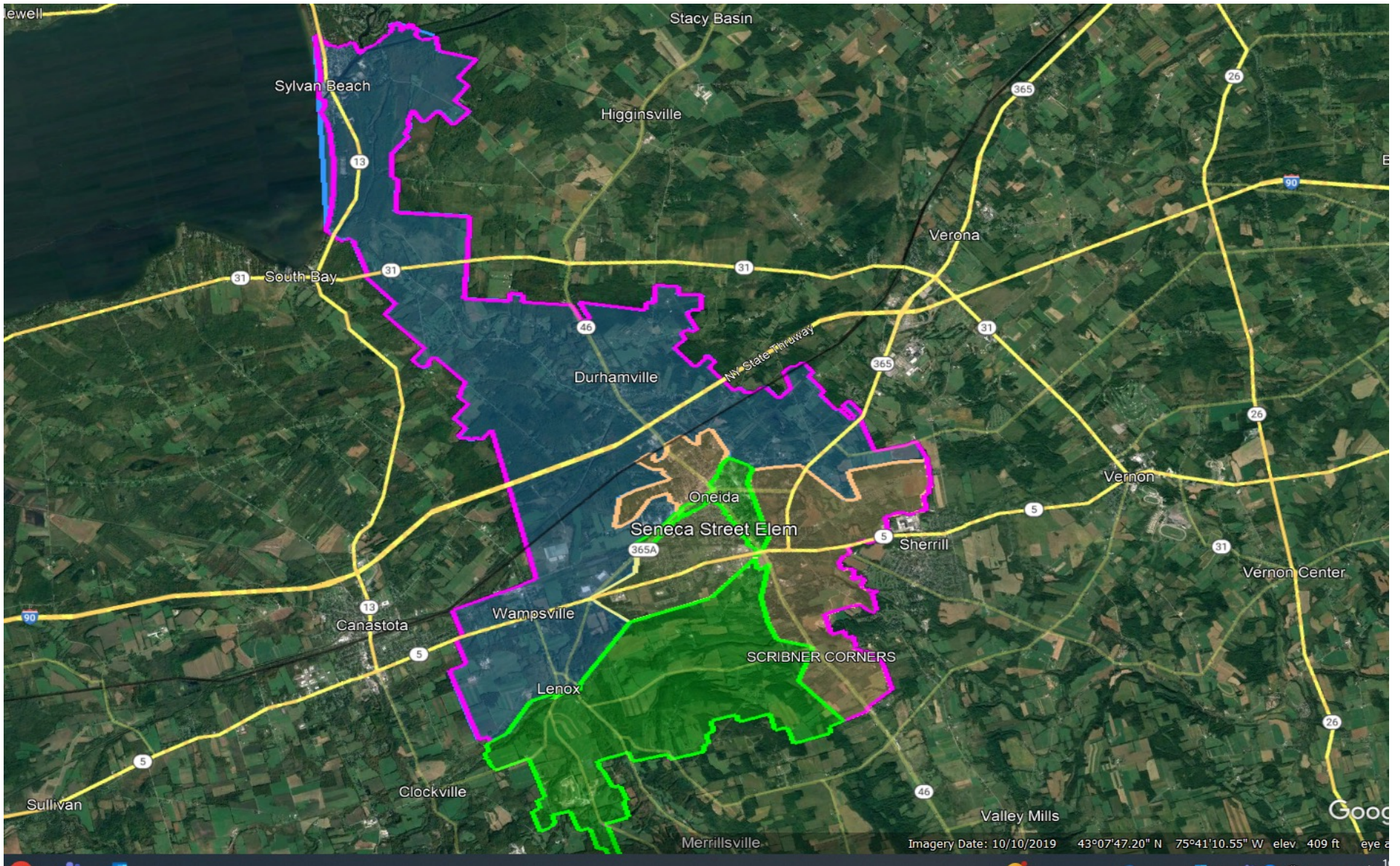
Mileage Between Elementary Schools				
	Durhamville	North Broad	Seneca Street	Willard Prior
Durhamville		2.4	3.5	3.1
North Broad	2.4		1.1	.9
Seneca Street	3.5	1.1		.5
Willard Prior	3.1	.9	.5	

# All District Boundary



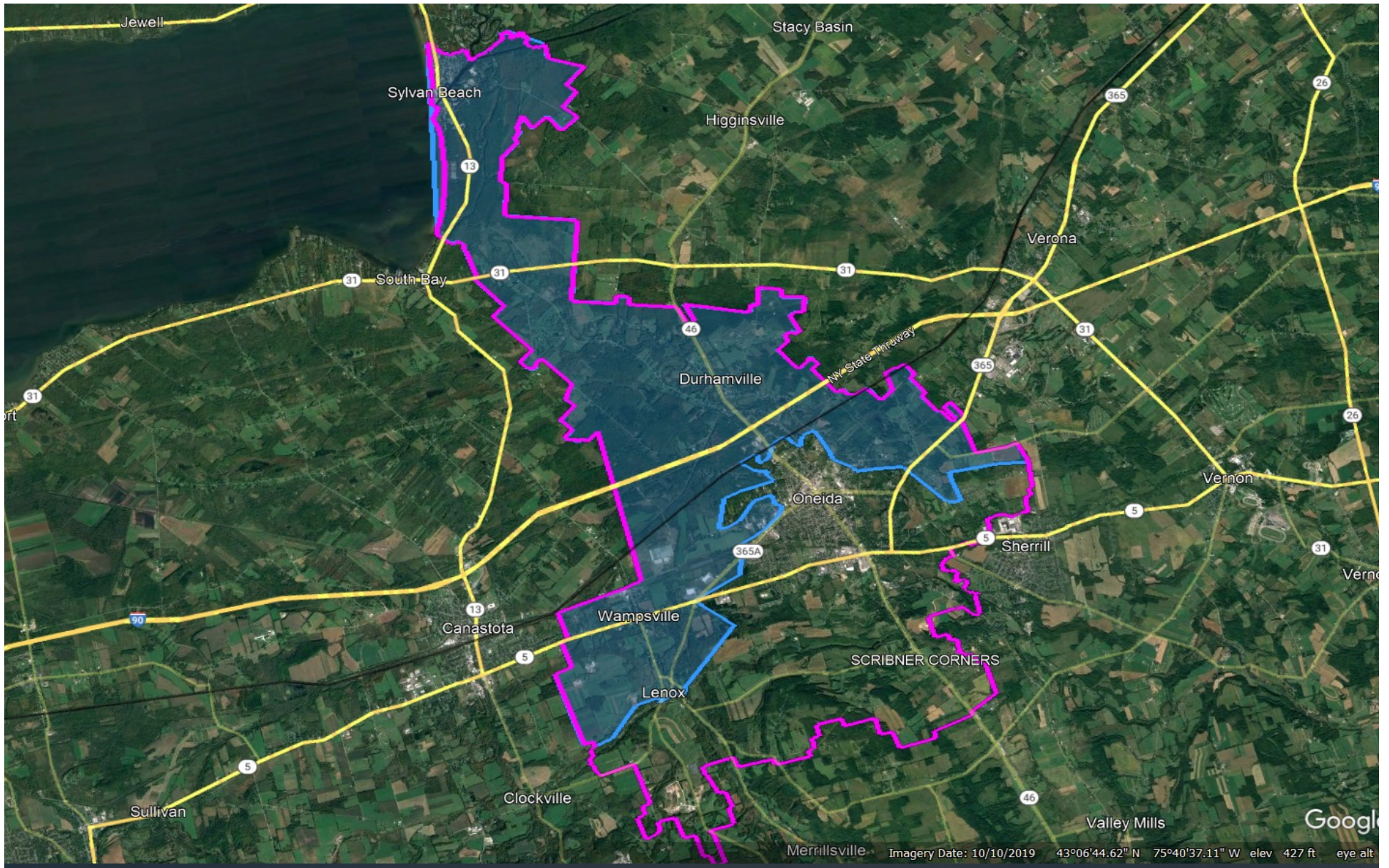


# Four Elementary Attendance Zones



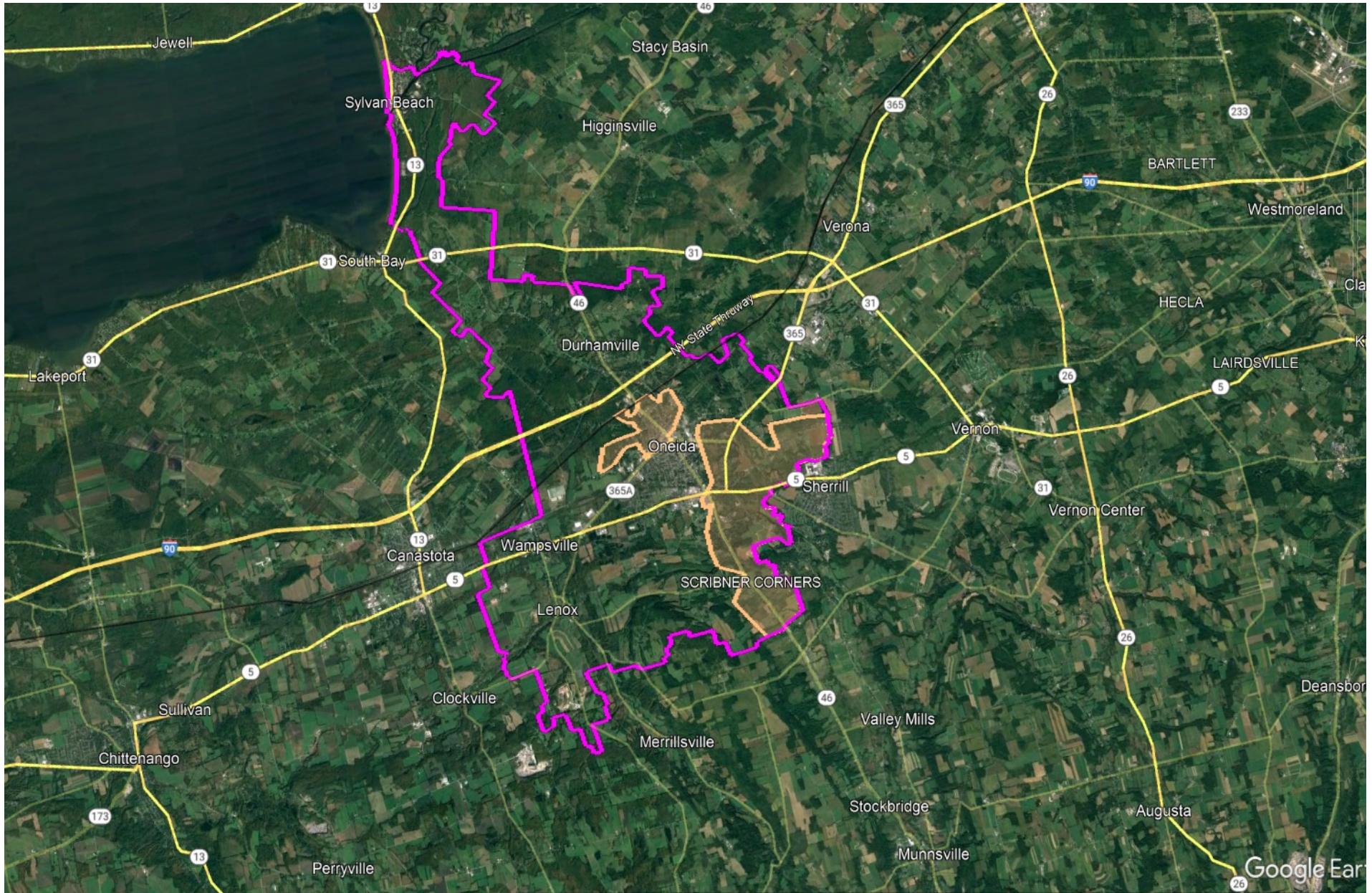


# Durhamville Elementary Attendance Zone



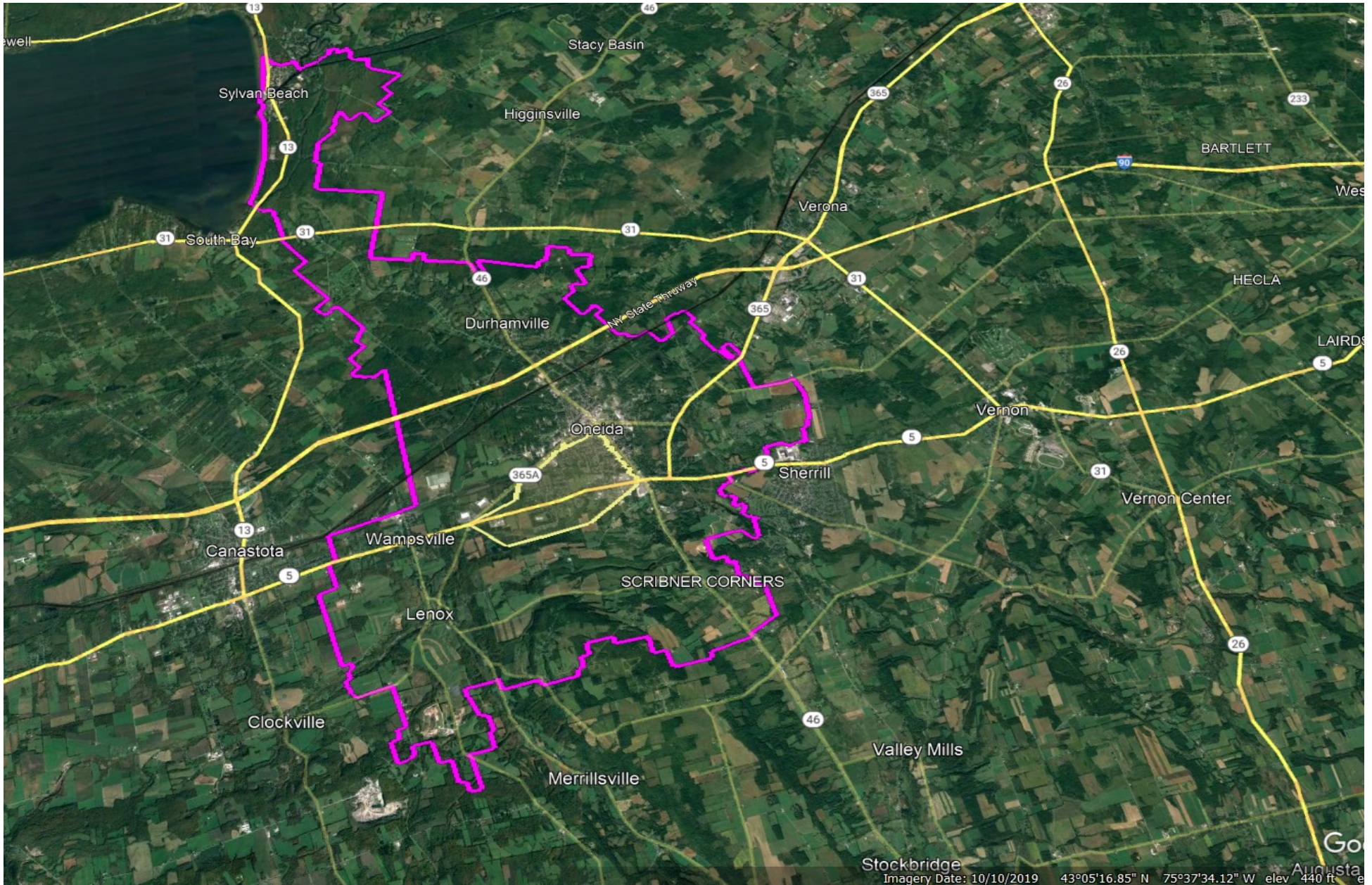


# North Broad Elementary School Attendance Zone



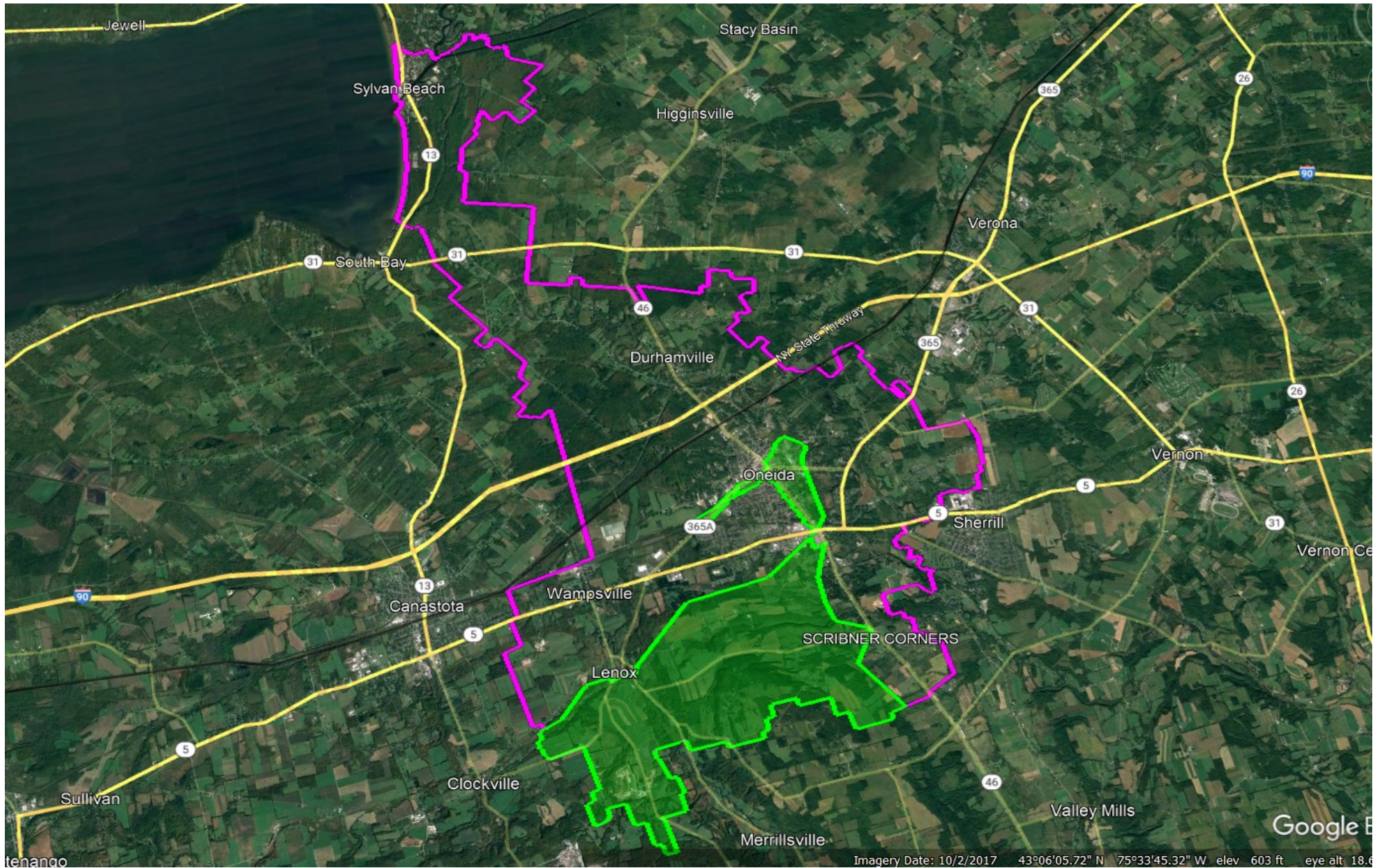


# Seneca Street Elementary Attendance Zone





# Willard Prior Attendance Zone





## Purpose of the Study/Critical Question

”In considering a number of options, is there a better way educationally and fiscally to reconfigure the grades and facilities to provide a sound instructional program now and in the future”?



# Two Common Approaches to Organizing Elementary Attendance Zones

- A. Neighborhood School Concept-Each elementary school contains all elementary grades and is generally organized around “neighborhoods.”
- B. Grade Center Concept (Princeton Plan)-Each elementary school is generally organized around grades, often creating primary schools and intermediate schools within a school district.



# Possible Elementary Grade Configurations

Using 2022-2023 Total General Education Students/Sections Per Grade Level

K-5 Grade Configuration						K-2; 3-5 Grade Center Configuration				
Grade Level	2022-23 # of Students	Current # of Sections	Average Section Size	Future # of Sections	Average Section Size	Assume Equal Distribution of Students	Current # of Sections	Average Section Size	Future # of Sections	Average Section Size
K	102	6	17.0	6	17.0	51/51	3/3	17.0	3/3	17.0
1	123	6	20.5	6	20.5	61/62	3/3	20.5	3/3	20.3/20.7
2	129	7	18.4	6	21.5	64/65	3/4	21.3/18.4	3/3	21.3/21.7
3	126	7	18.0	6	21.0	63/63	3/4	21.0/15.8	3/3	21.0
4	112	7	16.0	6	18.7	56/56	3/4	18.7/14.0	3/3	18.7
5	112	7	16.0	6	18.7	56/56	3/4	18.7/14.0	3/3	18.7
Total	704	40	17.6	36	19.6	704	40	19.5/16.6	36	19.6

# 2022-2023 Pre-K-5 Grade Configuration

## 2022-2023 Class Sizes for each Elementary School – 40 Sections

Grade		Current Number of Sections and Class Size of Each Section				
	Total # of Students by Grade	Durhamville	North Broad	Seneca Street	Willard Prior	# of Sections
Pre-K		-	-	-	81*	
K	102	15,16	22	17,18	14	6
1	123	22,22	20	19,20	20	6
2	129	17,17	19,20	18,19	19	7
3	126	15,19	16,17	18,19	22	7
4	112	17,18	13,14	14,15	21	7
5	112	19,20	16,16	13,13	15	7
K-5 Total	704	12 Sections 217 Students (18.1 avg.)	10 Sections 173 Students (17.3avg.)	12 Sections 203 Students (16.9 avg.)	6 Sections 111 Students (18.5 avg.)	40 Sections 704 Students (17.6 avg.)

Note: \* The Pre-K program is a half-day program. Pre-K students are not included in the total number of students.

# 2022-2023 Pre-K-5 Grade Configuration

## 2022-2023 Class Sizes for each Elementary School – 40 Sections

Grade	Total # of Students by Grade	Assuming an Equal Distribution of Students by Section for each Elementary School				# of Sections
		Durhamville	North Broad	Seneca Street	Willard Prior	
Pre-K		-	-	-	81*	
K	102	17,17	17	17,17	17	6
1	123	20,21	21	20,21	20	6
2	129	18,19	18,19	18,19	18	7
3	126	18,18	18,18	18,18	18	7
4	112	16,16	16,16	16,16	16	7
5	112	16,16	16,16	16,16	16	7
K-5 Total	704	12 Sections 212 Students (17.7 avg.)	10 Sections 175 Students (17.5 avg.)	12 Sections 212 Students (17.7 avg.)	6 Sections 105 Students (17.5 avg.)	40 Sections 704 Students (17.6 avg.)

Note: \* The Pre-K program is a half-day program. Pre-K students are not included in the total number of students.

# K-2; 3-5 Grade Center Configuration Option With Four Elementary Schools

2022-2023 Student Enrollment K-2; 3-5 Grade Center Configuration with 4 Elementary Schools 36 Total Sections (9 Sections Per School)						
Grade	Total # of Students by Grade	School A	School B	School C	School D	# of Sections/ Avg. Section Size
Pre-K	81*					
K	102	51/3 Sections	51/3 Sections			6/17.0
1	123	61/3 Sections	62/3 Sections			6/20.5
2	129	64/3 Sections	65/3 Sections			6/21.5
3	126			63/3 Sections	63/3 Sections	6/21.0
4	112			56/3 Sections	56/3 Sections	6/18.7
5	112			56/3 Sections	56/3 Sections	6/18.7
K-5 Total	704	176/9 Sections	178/ 9 Sections	175/9 Sections	175/9 Sections	36/19.6
Average		Avg. = 19.6	Avg. = 19.8	Avg. = 19.4	Avg. 19.4	

\* The Pre-K program is currently a half-day program. In the 2023-24 school year, a full day Pre-K program will be run with students housed at Willard Prior.

# Pre-K-5 - Close One of the Elementary Schools

## 2022-2023 Student Enrollment with 3 Elementary Schools Assuming an Equal Distribution of Students 36 Total Sections (12 Sections Per School)

Grade	Total # of Students by Grade	# of Students Per School	School A	School B	School C	# of Sections
Pre-K	81*					
K	102	34	17,17	17,17	17,17	6
1	123	41	20,21	20,21	20,21	6
2	129	43	21,22	21,22	21,22	6
3	126	42	21,21	21,21	21,21	6
4	112	37 or 38	18,19	18,19	19,19	6
5	112	37 or 38	18,19	18,19	19,19	6
K-5 Total	704	234 or 236	234/12 Sections	234/12 Sections	236/12 Sections	36
Average			Avg. = 19.5	Avg. = 19.5	Avg. = 19.7	

\* The Pre-K program is currently a half-day program. In the 2023-24 school year, a full day Pre-K program will be run with students housed at Willard Prior.

# Grade Center Configuration (K-1;2-3;4-5)

## Close One of the Elementary Schools

2022-2023 Student Enrollment					
Possible Grade Center Configuration with 3 Elementary Schools					
36 Total Sections (12 Sections Per School)					
Grade	Total # of Students by Grade	School A	School B	School C	# of Sections/ Avg. Section Size
Pre-K	81*				
K	102	102/6 Sections			6/17.0
1	123	123/6 Sections			6/20.5
2	129		129/6 Sections		6/21.5
3	126		126/6 Sections		6/21.0
4	112			112/6 Sections	6/18.7
5	112			112/6 Sections	6/18.7
K-5 Total	704	225/12 Sections	255/ 12 Sections	224/12 Sections	36/19.6
Average		Avg. = 18.8	Avg. = 21.3	Avg. = 18.7	
* The Pre-K program is currently a half-day program. In the 2023-24 school year, a full day Pre-K program will be run with students housed at Willard Prior.					



## Grade Configuration Options (Pre-K-5); (K-2; 3-5); (K-1; 2-3; 4-5)

	Current Pre-K-5 (Four School Buildings)			K-2; 3-5 Option (Four School Buildings)			Pre-K -5 Option (Three School Buildings)			K-1; 2-3 ; 4-5 Option (Three School Buildings)			
Schools	Number of Sections	Number of Students		Average # of Students	Number of Sections	Number of Students	Average # of Students						
DV	12	217	212	18.1	9	176	19.6						
School A								12	234	19.5	12	225	18.8
North Broad	10	173	175	17.3	9	175	19.8						
School B								12	234	19.5	12	255	21.3
Seneca Street	12	203	212	16.9	9	175	19.4						
School C								12	236	19.5	12	224	19.7
Willard Prior	6	111	105	18.5	9	175	19.4						
Total	40	704	17.6	17.6	36	704	19.6	36	704	19.7	36	704	19.6

# Age and Condition of Facilities

Overview of Oneida School Buildings						
Schools	Durhamville	North Broad	Seneca Street	Willard Prior	Middle School	High School
Address	5462 Main St Durhamville	230 N Broad St Oneida	436 Seneca St Oneida	205 East Ave Oneida	200 Markell Dr Wampsville	560 Seneca St Oneida
Year of Original Building	1958	1912	1978	1957	1967	1958
Sq. Ft. in Current Building	41,810	35,568	30,178	38,224	84,965	131,300
Number of Floors	1	3	1	1	1	2
Grades Housed	K-5	K-5	K-5	Pre-K-5	6-8	9-12
Students Served 2022-23	217	173	203	140 + 81	391	565
Architect	King and King					
NOTES: All information was taken from the NYS Building Condition Survey completed in 2015 except the enrollments that were drawn from the 2022-23 academic year.						

# Summary of Elementary Full Size Classrooms

## 2022-23 Summary of Elementary Full Size Classrooms by Building

School	Grade Levels	# of Students	# of Full Size Common Branch Classroom	# of Full Size Special Education Classrooms	# of Other Full Size Classrooms	Total # of Full Size Classrooms
Durhamville	K-5	217	12	3	2	17
North Broad	K-5	173	10	0	7	17
Seneca Street	K-5	203	12	0	3	15
Willard Prior	Pre-K-5	140 (+ 81 Pre-K)	6 + Pre-K (2) + UCP (3)	4 + 1RR	3	19
Total	K-5	733 (+ 81 Pre-K)	40 + Pre-K(2) + UCP (3)	8	15	68

# Educational Space Utilization

- General Classrooms
- Special Services
- Building Specific Areas
- Program Specific Areas
- Land/Site
- Miscellaneous Areas

# Break-out Session on Closing an Elementary School

- Pre-K- 5 Neighborhood Schools
- K-1; 2-3; 4-5 Grade Center Configuration  
(Two Groups)

# Staffing Overview – 2022-2023

Staff Positions by Title for District	
Title	Number of Staff
Aide	28 + TBD
Business Office/DO	12
Bus Driver	26
Bus Monitor	8
10 mo. Clerical	4
11 mo. Clerical	9
12 mo. Clerical	2
District Office Adm.	3
District Wide	11
Custodian/Sr. Custodian/ Head Custodian /Cleaner	16
Food Service	20
Maintenance	5
Nurse	8
Principal	6
Asst. Principal	3
Supervisors (Blds., & Grounds, Transportation, Food Service)	4
Teacher	189
Teaching Assistant	8

# 2022-2023 Elementary Building Based Positions

Overview Elementary Building Based Positions – 2022-2023					
Title	Durhamville	North Broad	Seneca Street	Willard Prior	District-Wide
Aide	6	8	4	17	
Custodian	2	2	2	2	
Food Service	2	2	2	2	
Nurse	1	1	1 (Includes St. Pat's)	1	
Principal	1	1	1	1	
School Secretary	1	1	1	1	
Teacher	12	10	12	6	
Teaching Assistant/CFSP	3/.4	0/.6	1/.85	2.15	

# 2022-2023 Building Based Teacher Positions

## Building Based Teacher Positions – 2022-2023

Title	Durhamville	North Broad	Seneca Street	Willard Prior	District-wide (DW)
Pre-K	DW	DW	DW	2	Pre-K
K-5	12	10	12	6	
AIS Math/AIS Reading	1.0/1.0	1.5/1.5	1.0/1.0	1.0/1.0	
ART	.5	.5	.5	.5	
Counselor/Social Worker/CFSP	.4/.6/.4	.5/.5/.5	.6/.4/.85.	.4/.6/.15	
ESL	DW	DW	1.0	DW	ESL
Library	.55.	.5	.5	.45	
Band/Chorus	.4/.55	.4 /.5	.2/.5	.2/.45	
OT/PT	.6/.2	.2/.05	.2/.05	1.0/.5	
PE	1	1	1	1	
Psychologist	DW	DW	DW	DW	2 Psychologists
Special Education	4	1	1	5	
Speech Therapists	1.0/.3	.7	.6	1.0/.4/.35	



# Next Scheduled Advisory Committee Meetings

(Optional tours will precede each meeting and will begin at 5:45 pm)

- Thursday, September 28, 2023 at Otto Shortell Middle School.
- Thursday, October 26, 2023 at Oneida High School



(Meetings will begin at 6:30 pm and last no longer than two hours)

# Advisory Committee Meeting Schedule

(Meetings will begin at 6:30 pm and last approximately two hours)

- January 26, 2023
- February 16, 2023
- ~~March 13, 2023~~ (March 21)
- April 27, 2023
- ~~May 25, 2023~~ (June 5)
- September 28, 2023
- October 26, 2023
- November Date TBD – if necessary



(Optional tours precede meetings 2-7 and will begin at 5:45 pm)

# Focus/Location of Each Meeting

Date	Topic	Location
Thursday, January 26	General overview of the study process including the committee's role; student enrollment projections	Costello Training Center
Thursday, February 16	<del>Overview of the elementary program</del> <b>Overview of district facilities</b>	Durhamville Elem. Gym
Monday, <del>March 13</del> Tuesday, March 21	<del>Overview of district facilities</del> <b>Overview of the elementary program</b>	Willard Prior Elem. Gym
Thursday, April 27	Overview of district transportation operation; <del>Overview of middle school and high school program</del>	Seneca Street Elem. Gym
Thursday, <del>May 25</del> <b>Monday, June 5</b>	Staffing patterns in the district; <del>Begin</del> <b>Continue</b> exploring possible future facility options	North Broad Street Elem. Gym
Thursday, September 28	The financial status of the district and continued implications of possible future facility options. <b>Overview of middle school and high school program</b>	Otto Shortell MS Gym
Thursday, October 26	Review of draft final report	Oneida High School Gym
November Date TBD	Review of draft final report	Costello Training Center

# Questions????

